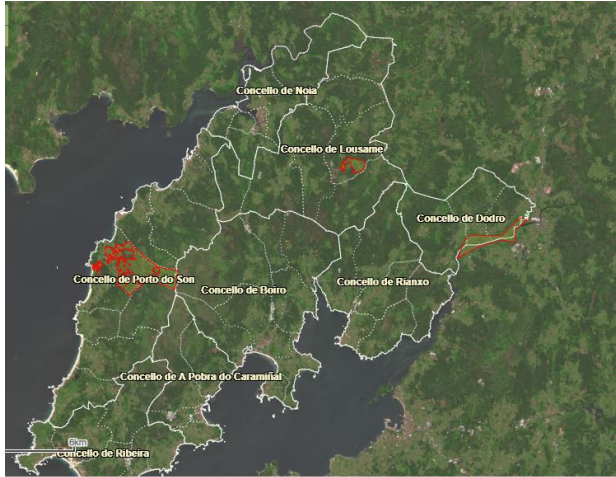


# Unit1. Forest and Human

## Barbanza Ecosocial Laboratory



### Description

The Barbanza Ecosocial Laboratory is a project that looks at the past and present of local communities to promote sustainable use of the future. It is a pioneering project in the State, so there is no Laboratory that combines science and society and that is oriented towards research and praxis in eco-agro-innovation.

The project is carried out in the Barbanza county, which includes the municipalities of Rianxo, Ribeira, A Pobra do Caramiñal, Boiro, Noia, Lousame, Porto do Son and Dodro. This 244.2 km<sup>2</sup>, a territory with common natural, geographical and historical characteristics, has great economic dynamism, but faces a series of specific risks, such as:

- Land use change and abandonment
- High number of wildfires
- Population decline
- Loss of primary and industrial productive activities for the benefit of the service sector
- Excessive mobility demands, satisfied almost exclusively through the use of private cars
- Impoverishment of the community system, decrease in mutual support networks and spaces for socialization

In this context, citizens have been weaving cooperative, business or neighborhood association proposals that, based on agroecological projects, artisanal fishing or maintenance of community forests, are moving towards a socio-ecological transition.

The Barbanza Ecosocial Laboratory is a project financed by the Banco Santander Foundation that has been promoted by the Rede de Innovación Arousa Foundation (RIA) in collaboration with the University of Santiago de Compostela through the HISTAGRA group and with the support of the Juana de Vega foundation.

The project consists of two phases, research and action. The research aims to identify how much of what took place in the past can be the seed of the future and how we can relate the knowledge of experts and citizens to improve the capacities of a territory. In addition, this phase must serve to generate trust and weave alliances with key actors in the territory and that enable active participation in the action phase.

The action phase will try to launch seed projects, a series of actions selected during the first phase with the help of an advisory board. The seed projects will receive technical and financial support for their start-up and their evolution will be monitored throughout the year. It is intended to evaluate the social, environmental or economic impact of the actions, with the aim of extracting lessons and being able to compile them in different publications as examples to replicate in other locations.

### Goals

The aim is to articulate and strengthen eco-agro-innovative proposals that respond to the bioregion in which the project is located, while starting from a whole set of knowledge, both historical and current. With this knowledge, more sustainable future alternatives are proposed.

### Activities

- Creation of an interactive map, it includes the progress of the Laboratory's research, but also allows you to consult a large amount of geographical information on land use, plots, toponymy and forests in common hands, as well as visualizing the changes that have taken place in the territory during the last decades.
- Advances in the research of the Ecosocial Laboratory of Barbanza in territorial planning, governance, land ownership, land use, methodology and identity and culture.
- Seed projects
- Meetings
- Creation and incorporation of audiovisual content to our broadcast channels.

### Impact

- Possibility of combining the past and present of local communities to promote sustainable use of the future.

### Social Media

<https://barbanzaecosocial.org/>