

Unit 7. Social uses, recreation and outdoors

Evo Hiking Area

Description

There are seven national hiking areas in Finland, which offer a wide range of recreational activities. The hiking areas include marked hiking and skiing trails, nature trails, camping sites and lean-to shelters. Many of them also have a visitor centre or hiking centre as well as cabins and lodges that are rented out. The services have been designed to accommodate also visitors with physical disabilities as much as possible.

Evo hiking area is located in Southern Finland about 150 km north from the capital, Helsinki, and it has been established for outdoor activities. The outdoor recreation needs in the hiking area are given special attention in forestry, hunting, fishing and other uses of the area.

The Evo area also hosts a special Evo Camping Centre that offers an excellent setting with permanent structures for organising large or small camps and events. The versatile camping centre is particularly well suited to camping events organised by scouts and other parties thanks to its transport connections, the services in the area and the natural conditions. The camping centre can be booked all year round.



Evo Camping Centre hosts large domestic and international scout camps frequently

Activities:

- Geocaching
- Skiing and snowshoeing
- Climbing
- Hiking in nature trails
- Picking of berries and mushrooms
- Canoeing
- Fishing (A special permit is needed)
- Hunting (A special permit is needed)
- Cycling
- Horse riding
- Guided group tours
- Orienteering
- Swimming

Goal

The goal is to offer recreational activities for all citizens

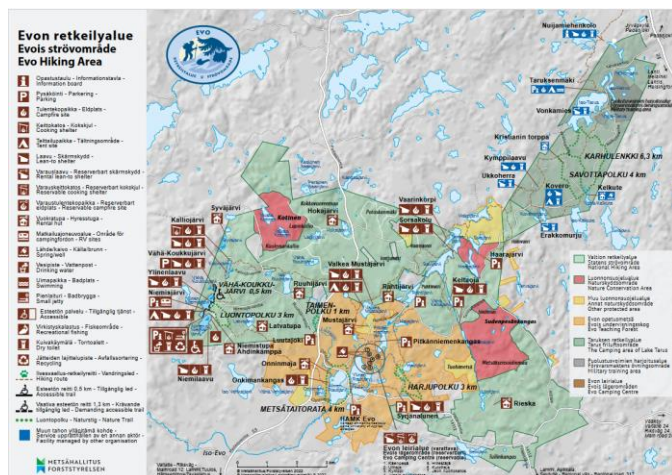
Impact

The area is the most popular hiking area in Finland and attracts over 80 000 visitors annually.

Source

Metsähallitus (Finnish Forest and Park Service)

<https://www.nationalparks.fi/evo>



The map of Evo Hiking Area demonstrates the diverse facilities in the area